

LIGHT EQUIPMENT PORTFOLIO

Downloaded from <http://ajph.org/> on November 10, 2015



dynapac.com

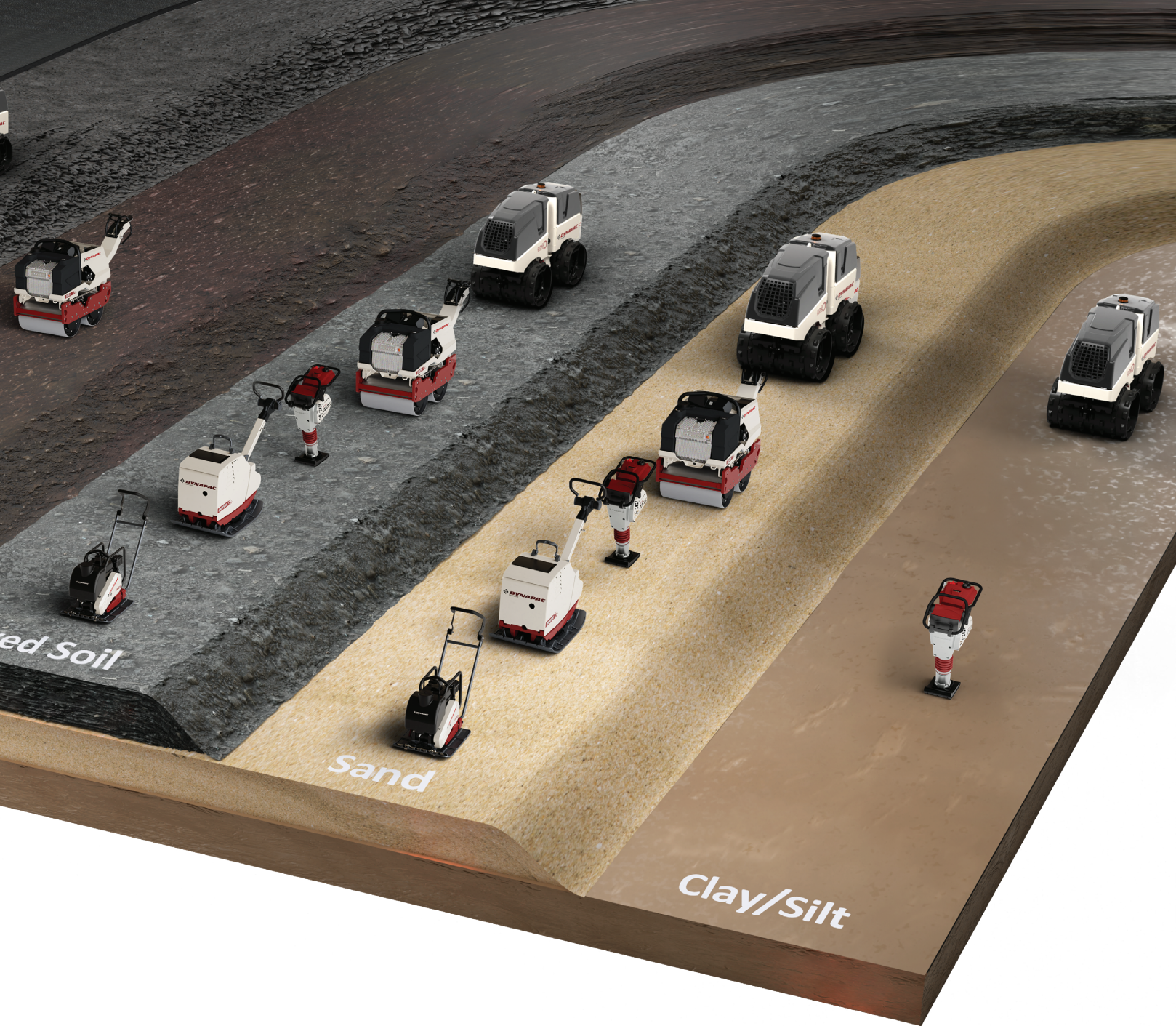


LIGHT EQUIPMENT

PERFECT HELPER FOR EVERY SURFACE

02

Dynapac
LIGHT EQUIPMENT



The Dynapac Light Equipment range complements our larger compaction & paving equipment to get the job done in relatively confined spaces. We focus on every possible type of material to compact, through weight classes and different types of machines. Combined with Dynapac's decades of experience in the world of compaction & paving, this incredible range of equipment will ensure that you stay ahead of the game.

Here, you discover more about the walk-behind equipment from Dynapac. Rammers, forward and reversible vibratory plates, twin drum roller and the utility roller – a fantastic range of equipment that is Designed to Perform. Built to Last!

APPLICATIONS

Landscaping and gardening
Construction pre compactions
Trench works and earthworks
Asphalt works and repairs



FORWARD PLATES

DFP SERIES



BUILT TOUGH

ENGINE PROTECTION FRAME

Equipment is designed to withstand workplace abuse with safeguarding the engine from heavy material falls and potential accidents but also easy and convenient access for regular checks and maintenance.

V-BELT PROTECTION COVER

Around the V-belt offers protection against dust and weather conditions maximizing the service life of the V-belt and the other components.

DRIVE UNITS

Both Honda gasoline and Hatz diesel come with proven reliability, performance and simplified maintenance.



PRODUCTIVITY

WEAR RESISTANT BOTTOM PLATE

Purpose built and designed cast iron bottom plates to handle all kind of material.

WATER SPRINKLER SYSTEM

Settles dust and prevents material sticking on the bottom plate in asphalt application delivering optimum results.

SYNTHETIC MATS

Easy add on synthetic mats for block paving application.



OPERATOR COMFORT

LOW HAV HANDLES

Comfort operation all day with low Hand Arm Vibration (HAV) levels on standard handles (<5 m/s²). The levels are further lowered with the use of optional comfort handles.

TRANSPORT WHEELS

As option further simplifies the movement of the machine in the jobsite.



ASPHALT SPECIALS

DFP7AX

SPECIAL BASE-PLATE DESIGN

The tapered edges for making swift turns without leaving any marks.

SPRINKLER SYSTEM

The top spray with flow-controlled sprinkler system guarantees that no material adheres to the plate.

QUICK RELEASE TANK

The quick dismount of water tank ensures easy refills in between work. The level indicator on the tank further assists the operator in keeping a check on the water level.



DFQ7AX

HARDOX BOTTOM PLATE

Withstands abrasive materials and rocks in soil during compaction making it less prone to wear and damages.

BUILT IN WATER SPRINKLER SYSTEM

The built in water tank with anti rust coating and flow controller makes sure no material sticks to the plate in asphalt jobsite.

COMFORT HANDLE ERGO GRIP

Low vibration levels ensure comfortable operation and reduced Hand arm vibration (HAV) values allows stress free working all day.



FORWARD PLATE SPECIALS D.ROUND

RIGHT SIZE, RIGHT FORCE

Optimum width and right compaction force ensuring non damaged optic cables during the operation.

HIGH MANEUVERABILITY

Special design handle ensure easy steering of the machine with easy U-turn possibility.

BUILT TOUGH

All round engine protection with V-belt protection.

EASE OF MOVEMENT

Single point lift placing the machine in and out of the trenches and also for transport.



FORWARD PLATES

DFP SERIES



		DFP5X	DFP6	DFP7	DFP8
OPERATING MASS	kg	52	65	72	83
	lbs	110	130	150	170
OPERATING WIDTH	mm	300	350	400	360
	in	9	11	12	17
CENTRIFUGAL FORCE	kN	9	10	12	10
	lbf	2023	2248	2697	2248
ENGINE MODEL		Honda GXR120	Honda GX120	Honda GX120	Honda GX120
EQUIPMENT OPTIONS					
WATER TANK, DETACHABLE, TOP SPRINKLER, 13.5L (3.5 gal)			<input type="radio"/>	<input type="radio"/>	
WATER TANK, DETACHABLE, BOTTOM SPRINKLER, 6L/7L (1.6/1.8 gal)			<input type="radio"/>		<input type="radio"/>
WATER TANK, FIXED, BOTTOM SPRINKLER, 11L (2.9 gal)					
COMFORT HANDLE, HAV < 2.5 m/s ² (492 fpm)				<input type="radio"/>	<input type="radio"/>
COMFORT HANDLE, HAV < 2.5 m/s ² (492 fpm), CENTER MOUNT					
COMFORT HANDLE, HAV < 3.2 m/s ² (630 fpm), ERGO GRIP					
TRANSPORT WHEELS			<input type="radio"/>	<input type="radio"/>	<input type="radio"/>
SYNTHETIC MATS		<input type="radio"/>	<input type="radio"/>	<input type="radio"/>	<input type="radio"/>



COMFORT HANDLE



COMFORT HANDLE,
CENTRE MOUNT

WATER TANK
(13.5L)



DFP8X	DFP9	DFP9X	DFP10D	DFP11	DFP12D	DFP7AX	DFQ7AX	D.ROUND
90	91	94	104	108	122	82	81	88
198	200	207	229	238	268	180	178	194
430	450	500	450	500	500	500	530	430
17	18	19	18	19	19	19	20	17
15	18	19	18	25	25	12	11	14
3372	406	4271	4046	5620	5620	2697	3147	2472
Honda GX160	Honda GX160	Honda GX160	Hatz 1B20	Honda GX160	Hatz 1B20	Honda GX120	Honda GX160	Honda GX160
				○	○	Standard		
	○		○					
○		○						
	○		○	○	○	○		
				○	○	○		
○		○					○	
○	○	○	○	○	○	○	○	
○	○	○	○	○	○		○	○



WATER TANK
(6L,7L)



WATER TANK
(11L)

COMFORT HANDLE,
ERGO GRIP

APPLICATIONS

Landscaping and gardening
Heavy construction pre compactions
Earthworks and road works
Asphalt works and repairs



REVERSIBLE PLATES

DRP SERIES



OPERATOR COMFORT

LOW HAV HANDLES

Ensures comfortable operation and with reduced Hand Arm Vibration (HAV) values longer working hours are permitted.

REVERSE DRIVE PROTECTION

The operator is always safe from the machine running over when operating in reverse.

E-START

Easy and effortless starting process. The machine is also equipped with back up recoil starters as standard.



BUILT TOUGH

ALL-AROUND PROTECTION HOOD

Keeps the equipment safe and sound under rough conditions including accidental hits from a forklift or wheel loader.

V-BELT PROTECTION

In addition to the protection hood V-belt has its own cover that keeps the belt protected from dust and dirt ensuring maximised lifetime.



EASY MAINTENANCE

SELF-CLEANING BASE PLATE

Open-style construction base-plate prevents the stones from getting stuck, thus reducing the wear & tear.

SWING OPEN HOOD

Conveniently provides complete access to daily and period maintenance components of the equipment simplified and easy periodic maintenance to avoid unwanted downtime.

HOOR METER

Helps to track usage of equipment, making it easier to keep up with schedule maintenance to keep them running efficiently.

AUTO BELT TENSIONER

No periodic checks required for tensioning the belt.



HIGH QUALITY

DYNAPAC COMPACTION INDICATOR (DCI)

An active measuring system to indicate the compaction progress. The system shows the compaction level on a light display providing the operator conclusion on compacted material thus avoiding unnecessary passes.



LOW HAV HANDLE

ONE POINT LIFT

LOCKABLE HANDLE TYPE

ALL-AROUND PROTECTION HOOD



REVERSIBLE PLATES

DRP SERIES



		DRP15X	DRP15D	DRP15DX	DRP20	DRP20D
OPERATING MASS	kg	140	150	155	205	210
	lbs	309	331	342	452	463
OPERATING WIDTH	mm	500	400	500	600	420
	in	20	16	20	24	17
CENTRIFUGAL FORCE	kN	25	25	25	35	35
	lbf	5620	5620	5620	7868	7868
ENGINE MODEL		Honda GX160	Hatz 1B20	Hatz 1B20	Honda GX160	Hatz 1B20
EQUIPMENT OPTIONS						
DYNAPAC COMPACTION METER (DCI)						
EXTENSION PLATES (50 mm, 150 mm)						
HOUR METER					<input type="checkbox"/>	
E-START						
TRANSPORT WHEELS		<input type="checkbox"/>	<input type="checkbox"/>	<input type="checkbox"/>	<input type="checkbox"/>	<input type="checkbox"/>
WATER TANK, (12L)		<input type="checkbox"/>	<input type="checkbox"/>	<input type="checkbox"/>		
SYNTHETIC MATS		<input type="checkbox"/>	<input type="checkbox"/>	<input type="checkbox"/>	<input type="checkbox"/>	<input type="checkbox"/>



EASE OF SERVICE



DRP20DX	DRP25D	DRP40DX	DRP45DX	DRP60D	DRP70D
225	280	405	460	570	687
496	617	893	1014	1257	1515
600	600	550	650	700	800
24	24	22	26	28	31
35	40	50	60	70	100
7868	8992	11240	13489	15737	22481
Hatz 1B20	Hatz 1B20	Hatz 1B40	Hatz 1B40	Hatz 1D81	Hatz 1D90
		○	○	○	○
		○	○	○	○
○	Standard	Standard	Standard	Standard	Standard
	Standard	Standard	Standard	Standard	Standard
○	○				
○	○	○	○	○	



APPLICATIONS

Landscaping and gardening
Heavy construction pre compactions
Earthworks and road works
Asphalt works and repairs



REVERSIBLE PLATES

DRQ SERIES



BUILT TOUGH

HARDOX BOTTOM PLATE

Can withstand abrasive material in soil during compaction making it less prone to wear and damages.

SELF-CLEANING BASE PLATE

Open-style construction base-plate prevents the stones from getting stuck, thus reducing the wear & tear.

V-BELT PROTECTION

The V-belt cover keeps the belt protected all time from dust and dirt ensuring maximised lifetime.



EASY MAINTENANCE

SEMI OPEN FRAME

Not only ensures protection from material fall over but also allows more access to daily maintenance and serviceable components.

BUILT IN BELT TENSIONER

Makes belt tensioning process simple and quick.



OPERATOR COMFORT

LOW HAV HANDLES

Ensures comfortable operation and with reduced Hand Arm vibration (HAV) values longer working hours are permitted.

REVERSE DRIVE PROTECTION

The operator is always safe from the machine running over when operating in reverse.

DRQ50D WITH STATUS INDICATOR



		DRQ15	DRQ25	DRQ30	DRQ35	DRQ50D
OPERATING MASS	kg	165	240	282	337	454
	lbs	364	529	622	743	1000
OPERATING WIDTH	mm	450	500	550	600	700
	in	18	20	22	24	28
CENTRIFUGAL FORCE	kN	32	38	40	55	66
	lbf	7194	8543	8992	12364	14837
ENGINE MODEL		Honda GX200	Honda GX200	Honda GX270	Honda GX390	Hatz 1B50 E
EQUIPMENT ACCESSORIES						
SYNTHETIC MATS		<input type="radio"/>	<input type="radio"/>	<input type="radio"/>		
E-START						<input type="radio"/>

APPLICATIONS

Landscaping and pipework
Confined space compactions
Trench works and earthworks
Asphalt repair and patch works



RAMMER DR SERIES



OPERATOR COMFORT

LOW HAV HANDLES

Low vibration levels ensure comfortable operation and reduced Hand arm vibration (HAV) values allows stress free working all day. DR6X also has the lowest HAV in its class with vibration less than 5m/s².

HEIGHT ADJUSTABLE HANDLE

Provides a high & low setting with a difference of 10cm / 4in based on the operator requirement.

MULTIFUNCTIONAL KNOB

The knob controls both fuel supply and engine stop function. The operator does not have to worry about forgetting to switch the fuel supply off after switching off the rammer.

CASTOR WHEELS WITH VERTICALLY ORIENTED GRIP

Provides easy movement of rammer and also minimizes strain on the arm by providing an easy lift.



LOW MAINTENANCE AND DOWNTIME

SELF CLEANING HOUSING

Prevents dust build up around the prefilter making it more efficient and also ensures the longer life on the engine filter that lasts a full season.

HOURLY METER

Helps to track usage of equipment, making it easier to keep schedule maintenance and service to keep them running efficiently. The hour meter also doubles as RPM meter with low RPM indication.

LOW OIL INDICATOR

Avoids bad surprises with engine breakdown, ensuring engine is not started with low oil levels.

SWAPPABLE FOOT TYPES

Meets different application requirement with different foot types and widths. The foot can be easily swapped by removing just four bolts.



BUILT TOUGH

DUAL STAGE AIRFILTER

The engine runs efficiently without breakdowns with dual stage air filtration even in toughest work environment

ALL ROUND PROTECTION

The rammer can withstand a fall from any side or material falling over it. The engine also is protected from all sides, avoiding breakdowns due to transport and rough handling.

HONDA GXR

The engine is built for a rammer application to meet the high demands. The rammer can be transported horizontally and crank up promptly without the need for extensive setup, saving valuable time.

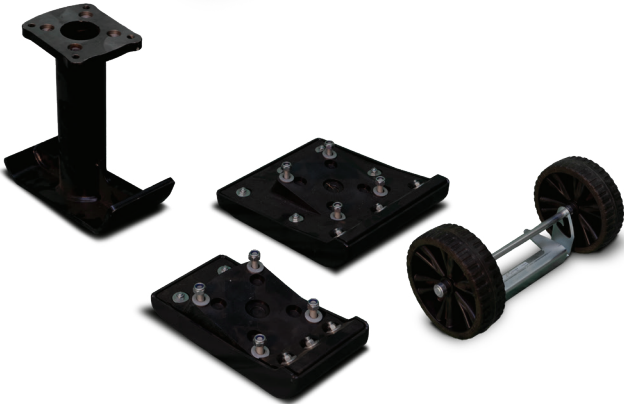




RAMMER DR SERIES



		DR6X	DR7X
OPERATING MASS	kg	58	68
	lbs	128	150
OPERATING WIDTH	mm	230	280
	in	9	11
CENTRIFUGAL FORCE	kN	15	17
	lbf	3372	3822
ENGINE MODEL		Honda GXR 120	Honda GXR 120
EQUIPMENT ACCESSORIES			
TRANSPORT WHEELS		<input type="checkbox"/>	<input type="checkbox"/>
FOOT WIDTHS		<input type="checkbox"/>	<input type="checkbox"/>
FOOT EXTENSIONS		<input type="checkbox"/>	<input type="checkbox"/>



APPLICATIONS

City and rural roads
Cycle paths and footpaths
Asphalt repair works
Earth works



TWIN DRUM ROLLER

DTR SERIES



OPERATOR COMFORT

ANTI-CRUSH MECHANISM

On the operator handle and a parking brake ensures a safe operating environment.

LOW VIBRATION HANDLE

Minimizes operator fatigue and allow long hours of stress-free operation easily.

E-START

Easy and effortless starting process. The machine is also equipped with back up recoil starter as standard.



EASY MAINTAINENCE

EASY SERVICE ACCESS

All service point can be readily reached for routine maintenance, thereby minimizing both service duration and downtime hours.

HOOR METER

Help to track usage of equipment, making it easier to keep schedule maintenance and service to keep them running efficiently.



HIGH QUALITY

DUAL AMPLITUDE

The dual-amplitude oscillator effectively meets the job specifications, delivering both high-quality results by achieving depth with high amplitude and ensuring a smooth finish with low amplitude.

HYDROSTATIC DRIVEN DRUMS

The hydrostatic drive ensures smooth start/stop with precise speed control and delivers high operating and transport speed with high gradeability.



BUILT TOUGH

ALL ROUND PROTECTION

The roller can withstand material fall over it and accidental damages from other machines due to the protection frame and the all round metal protection.



PRODUCTIVITY

MINIMUM FRAME OVERHANG

Makes compaction possible very close to the wall. The ground clearance also allows compaction along the curb.

ADJUSTABLE SCRAPPERS

Each drum is equipped with scrappers which constantly clean up the drum surface to get the best compaction results. The scrappers are also easily accessible for cleaning with minimum effort.

LARGE WATER TANK OF 60L

Makes it more practical and can be used for relatively longer periods without having to re-fill. The water flow can be regulated based on the compacted material and also drained easily to avoid frosting.



		DTR75	DTR75D
OPERATING MASS	kg	720	740
	lbs	1587	1631
OPERATING WIDTH	mm	650	650
	in	26	26
MAX. FORWARD SPEED	km/h	5.9	5.9
	mph	3.6	3.6
MAX. REVERSE SPEED	km/h	2.5	2.5
	mph	1.6	1.6
CENTRIFUGAL FORCE	kN	25/13	25/13
	lbf	5620/2923	5620/2923
ENGINE MODEL		Honda GX 390	Kohler KD15-440
E-START		<input type="radio"/>	<input type="radio"/>

APPLICATIONS

Trench compaction
Soil compaction
Foundation compaction
Utility trenches



D.ONE TRENCH SETTER



HIGH QUALITY

AUTOMATIC VIBRATION CONTROL (AVC)

A feature that regulates the speed and vibration, the trench roller ensures excellent results in cohesive soil.

DUAL AMPLITUDE

Two separate vibrations are available based on the requirement. The AVC works in combination to deliver superior compaction quality with a choice of high and low amplitude vibration depending on the required compaction levels.

DYNAPAC COMPACTION INDICATOR (DCI)

Is an active measuring system to indicate the operator on the compaction progress and avoids unnecessary passes. The system shows the compaction level on a light display providing the operator conclusion on compacted material.

ARTICULATED STEERING

This feature enhanced maneuverability in tight spaces and improves traction on uneven terrain, with increased stability for compaction.



OPERATOR SAFETY

ACTIVE ZONE SYSTEM (AZS)

Stops the equipment if it gets too close to the operator. Unintentional or accidental operation of other equipment in the vicinity is avoided by the fool-proof remote-control technology.

ALL OPERATIONS ON REMOTE

All the machine functions including engine start-stop can be activated from the remote control eliminating the hassle of walking down the trench to re-start the equipment.



MAXIMUM UPTIME

STRONG HOOD

Built tough to avoid damages from handling material falls or equipment tip-over.

ON BOARD DIAGNOSTICS

Ensures fast trouble shooting of a problem and gets the machine back to work mode in no time. The machine also includes an integrated fuse tester for quick diagnostics.

DUAL BATTERY

Two split batteries ensures uninterrupted longer working hours and stress free operation to the operator. The remote can be operated with only one battery while the other charges. Alternatively, the machine can still be operated connected to cable if required.

AUTO ENGINE STOP

Prevents Engine breakdown by shutting it down at a lateral angle more than 45°.



STAY CONNECTED

RADIO FREQUENCY REMOTE

The radio-controlled remote technology is not sensitive to weather conditions and can work trouble free in conditions with extreme sunlight. Thus, you can focus on the compaction job rather than struggling to stay connected even in deep trenches with shoring.

LED STATUS INDICATOR

All important functions & safety features are shown in remote through LED status indicator.



MAXIMUM ROI

DETACHABLE DRUM EXTENSIONS

As a standard feature that let's you use the same equipment in tighter spaces and trenches.

SMOOTH DRUM

Attachment gives you the flexibility to take up special jobs without investing on completely new equipment.

ECOMODE

Operation keeps the diesel costs in check by regulating the engine speed.

MAINTENANCE FREE JOINT

Save on the time and effort of applying grease multiple times a day.





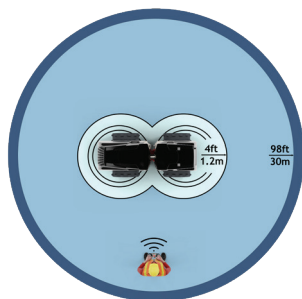
D.ONE WITH DCI



ON BOARD DIAGNOSTICS



ECO MODE



ACTIVE SAFE ZONE



LED STATUS INDICATOR

D.ONE

OPERATING MASS	kg	1595
	lbs	3596
OPERATING WIDTH	mm	850/610
	in	33/24
MAX. OPERATING SPEED	km/h	1.2
	mph	0.7
MAX. TRANSPORT SPEED	km/h	2.8
	mph	1.7
CENTRIFUGAL FORCE	kN	72/36
	lbf	16186/8093
ENGINE MODEL	Kohler KDW 1003	

OPTIONS

DYNAPAC COMPACTION INDICATOR (DCI)

ADJUSTABLE SCRAPPERS

PORTABLE REMOTE CHARGER

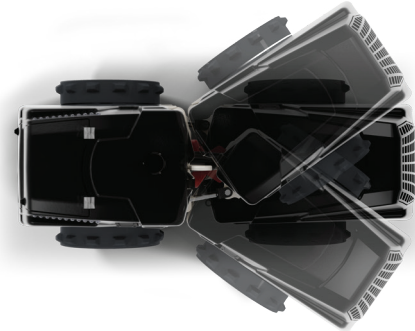
SMOOTH DRUM

FUEL INDICATOR

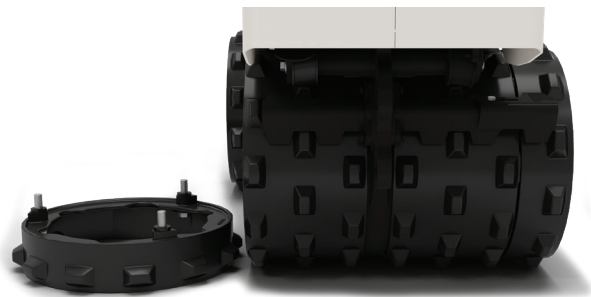
BIO HYDRAULIC OIL



D.ONE UTILITY ROLLER



ARTICULATED STEERING



REMOVABLE EXTENSIONS



SMOOTH DRUM



ADJUSTABLE SCRAPER



APPLICATIONS

Pipeline and trench work
Car parks and garages
Patch works and small road
Walkways and bike paths



MINI PAVER F80W



OPERATOR COMFORT

SIMPLE AND USER FRIENDLY CONTROLS

Easy to learn and simple dashboard layout. Always stay in control with easily reachable dashboard layout.

LOW TURNING RADIUS

Manoeuvre easily in tight spaces with the three-wheel construction with 1m turning radius.

ASSISTED FUNCTIONS

Stress-free and comfortable operation with hydraulic screed extension, auto conveyor & auger control.

E-START

Easy and effortless starting process. The machine is also comes equipped with back up recoil starters as standard.



HIGH PRODUCTIVITY

VARIABLE SCREED EXTENSION

Effortlessly adjust to varying paving widths through the hydraulic extension of the screed.

SCREED AND AUGER EXTENSION

Simple add on installation of extensions for screed and auger to accommodate wider paving projects.

COPYING ROLLERS

Simply follow the predefined profile of the road to lay the new mat of asphalt. The option saves time with no requirement to adjust the screed height during the job.

TWIN REAR WHEEL

Provides that extra traction for demanding job-sites.



MAXIMUM ROI

COMPACT SIZE

The low height and length of the machine makes it an ideal choice for tight space application like underground parking garages. The compact size also makes it very easy for transport.

LESS TIME TO SET UP

The machine can be easily unloaded and set up quickly for a jobsite. The propane gas heating also helps in fast heat up of screed.

ERROR DIAGNOSTICS SYSTEM

Fast trouble shooting with machine diagnostics with error codes. This helps in keeping the downtime low by reducing the service time.

F80W	UNITS	METRIC
OPERATING MASS	kg	1150
	lbs	3516
OPERATING WIDTH	mm	800 - 1650
	in	31 - 65 in
MAX. OPERATING SPEED	km/h	25
	mph	15
MAX. TRANSPORT SPEED	km/h	5
	mph	3
MAT THICKNESS	mm	5-100
	in	0.2 - 4
THEORITICAL CAPACITY	t/h	35
ENGINE MODEL		Hatz 1B50E

OPTIONS

COPYING ROLLER

HOPPER FILLING HELP

MECHANICAL EXTENSION 2 X 175 mm

AUGER LED LIGHT

TWIN REAR WHEELS

FRONT WHEEL SCRAPER





TANDEM ASPHALT ROLLERS



OPERATOR FRIENDLY

VIBRATION-DAMPED DRIVER'S PLATFORM

A spacious, vibration-damped operator platform and an ergonomically positioned step make these machines extremely operator friendly.

MODERN DASHBOARD

A modern, easily legible instrument panel with a warning panel and a fuel gauge is standard.



LOW NOISE - HIGH PERFORMANCE

LOW-NOISE KUBOTA ENGINE

The powerful and quiet water-cooled 3-cylinder Kubota diesel engine produces 18,1 kW (24.3 hp).

OUTSTANDING CLIMBING ABILITY

The large drum diameter and the drive motors connected in series. Makes it easy for the machine to climb over gradients. Optionally, the vibration can be deactivated on either the front or rear drum.



LONG SERVICE LIFE

MINIMAL RISK OF COLD WEATHER

These rollers are equipped with an innovative sprinkler tube and nozzles that are self-draining avoiding ice formation.

110-LITER WATER TANK

Enables long working intervals between refilling. The working period can be further extended using optional sprinkler timer.



EASY MAINTENANCE

MINIMIZED MAINTENANCE COSTS

Extended service intervals minimize maintenance costs. The machines have a maintenance-free steering hitch and steering cylinder. Few remaining service points are easily accessible.



EASY TRANSPORTATION

CENTRAL LIFTING EYE

Enables fast and easy loading for transportation. Additionally, the foldable ROPS keeps the transport height to a minimum.



DYNAPAC CC900S "SINGLE ARMED" VERSION

Dynapac CC900S - has the right side of the front drum free, which makes it possible to compact close to the walls. The front drum have an offset of 60 mm.



TANDEM ASPHALT ROLLERS

		CC800	CC900	CC900S	CC1000
OPERATING WEIGHT	kg	1575	1600	1640	1685
	lbs	3475	3500	3600	3700
MODULE MASS (FRONT/REAR)	kg	740/835	750/850	800/840	790/895
	lbs	1630/1845	1650/1850	1700/1900	1730/1970
DRUM WIDTH	mm	800	900	900	1000
	in	31.5	35	35	39
SPEED RANGE	km/h	0-9	0-9	0-9	0-9
	mph	0-6	0-6	0-6	0-6
THEOR. GRADEABILITY	%	40	40	50	40
CENTRIFUGAL FORCE	kN	17	17	17	17
	lbf	3820	3820	3820	3820
STATIC LINEAR LOAD (FRONT/REAR)	kg/cm	9.3/10.4	8.3/9.4	8.8/9.5	7.9/8.9
	lb/in	52/58	46/53	49/53	44/50
WATER TANK	l	110	110	110	110
	gal	30	30	30	30
ENGINE MODEL		Kubota D1105-E4B	Kubota D1105-E4B	Kubota D1105-E4B	Kubota D1105-E4B
OPTIONS		CC PAKETE		CC PLUS PAKETE	
BACKUP ALARM		Standard		Standard	
WORKING LIGHTS		Standard		Standard	
ROTATING BEACON		○		Standard	
LARGE WATERTANK, 190 L (50 gal)		○		○	
COMFORT SEAT		○		Standard	
CUP/CAN HOLDER		○		Standard	
SPRINKLER TIMER		○		Standard	
VIBR. SHUT OFF, FRONT OR REAR DRUM		○		Standard	
DRIVING LIGHTS		○		○	
DUAL FORWARD/REVERSE CONTROL		○		○	
SPRING LOADED SCRAPERS		○		○	
BIODEGRADABLE HYDRAULIC FLUID		○		○	
FIRE EXTINGUISHER		○		○	
REAR VIEW MIRROR, TRAFFIC VIEW		○		○	
WATER TANK COVER, LOCKABLE		○		○	
DYN@LINK BASIC		○		○	

* Additional configuration options available

S100 MIX SPREADER



OPERATOR COMFORT

MUSCULAR SKELETAL DISORDER

Avoids musculoskeletal injuries and problems, including strains and sprains, muscle and joint pains, broken bones cause by excessive and long hours of muscle effort force

SELF PROPELLED

The two wheel drive system takes all the load and makes it easy to move during operation & from point to point. The castor wheel on the rear makes it easy to handle tight maneuvers.

SIMPLE CONTROLS

The equipment's controls are all reachable easily by the operator making it very easy and simple to operate.



HIGH PRODUCTIVITY

VARIOUS APPLICATION

The equipment can be used for spreading different material like asphalt, sand, gravel.

MAT AND PROFILE CONTROL

The height of the screed and the profile can be easily adjusted by the operator depending on the requirement of the job.

ADJUSTABLE HATCHES

The hatches which can be independently opened or closed as required by the job.



S100		
LOADED MASS	kg	720
	lbs	1587
OPERATING WIDTH	mm	250-1000
	in	10 - 40
HOPPER CAPACITY	l	150
	gal	40
SPREAD HEIGHT	mm	100
	in	4
HATCHES		4
DRIVE UNIT		Honda GXV 160

PICK 'N SPRAY EMULSION SPRAYER



OPERATOR COMFORT

ALL IN ONE MODULE

The emulsion tank including all components of the spray system including the engine and hydraulics are built into one compact module that can be easily installed on pickup truck, mini truck or tractor.

IN CAB CONTROLS

The complete spray system can be operated from inside the cab including separated nozzle control for various spray application and fine end adjustments.

QUICK SET UP

Emulsion can be loaded in under 15 minutes. The spray bars are quickly unfolded for spraying during spray mode.

APPLICATION MODE

The emulsion can be sprayed using the spray bar or using hand lance depending on the requirement



HIGH QUALITY

HOMOGENEOUS MIX

The emulsion is always maintained at the optimum temperature for spraying using automated temperature control heating unit in combination with the tank insulation and continuous circulation.

PRECISE SPRAY RATE

The emulsion flow rate is controlled using a pump which provides operator precise control over the spray rate.

DROP LESS PURGE

Compressed air pushes back the emulsion back to the tank without even a drop of emulsion falling on the ground.

PICK 'N SPRAY		
LOADED MASS	kg	1200
	lbs	2646
OPERATING WIDTH	mm	2400
	in	95
TANK CAPACITY	l	600
	gal	159
MAX SPRAY SPEED	km/h	5
	mph	3
SPRAY RATE	g/m3	100-500
NOZZLES	units	12
DRIVE UNIT		Honda GX200





FOR AN EMISSION FREE WORLD

Z.ERA

EMISSION FREE WORKPLACE

The Z.ERA program at Danypac is helping accelerate our continual push towards an emission-free workplace. Among the many benefits of alternative energy-powered plates compared to their fossil fuel counterparts are a lower carbon footprint, more savings from lower operating costs, and less wear and tear from fewer fluids and moving parts.

SUSTAINABILITY

- Emission-free at point of use; no more exhaust fumes
- Reduced wastage and consumables compared to conventional engines
- Safer for operators in enclosed or confined spaces with no harmful exhaust fumes

OPERATOR COMFORT AND SAFETY

- Simple, effortless and safe equipment Start/Stop process
- Simple, tool-free plug-and-play battery swapping
- Low HAV level handles
- No engine noise

MAXIMUM UPTIME

- Rechargeable and swappable Li-ion batteries with fast charging option for uninterrupted use
- Battery charge level and error indicators provide quick diagnostics to prevent unexpected downtime
- No need for daily checks and maintenance before starting or after use, unlike conventional equipment

HIGH PRODUCTIVITY

- Uncompromising power with the high-performance electric motor
- More efficient with elimination of belt drive in plates
- Multiple options and accessories to meet different job-site requirement

LOW COST OF OWNERSHIP

- Maintenance free electric motor
- No air and fuel filters to be maintained
- Low running costs





FOR AN EMISSION FREE WORLD



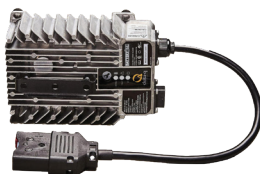
		DFP5X e	DFP8X e	DFP9X e	DFQ7AX e	D.ROUND e	DR6X e
OPERATING WEIGHT WITH BATTERY	kg	59	85	89	83	87	71
	lbs	129	188	197	183	192	157
OPERATING WIDTH	mm	350	430	500	530	430	230
	in	14	17	20	21	17	9
CENTRIFUGAL FORCE	kN	10	15	20	11	13	15
	lbf	2248	3372	4496	2473	2923	3372
EQUIPMENT ACCESSORIES							
WATER TANK, FIXED			○	○			
FOOT WIDTHS							○
TRANSPORT WHEEL			○	○	○		○
SYNTHETIC MAT		○	○	○	○		
BATTERY		○	○	○	○	○	○
CHARGER		○	○	○	○	○	○

Powered by

BATTERYONE



BOB5, BOB10, BOB14



BOC7



BOC13



BOX ONE



CONTACT US

FOR MORE INFORMATIONS

Your contact:

**WANT TO FIND
OUT MORE?**

Go to Dynapac Product Information
and scan the QR code to enter the
product site.

